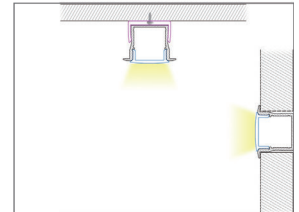
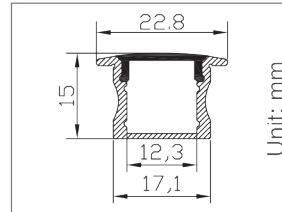




**Size:** 22.8×H15mm  
**Material:** AL6063+PC/PMMA  
**Surface:** Anodized/Coated  
**Lighting source width:** 12mm  
**Length:** 9ft/max  
**Installation:** Recessed or surface mounted.



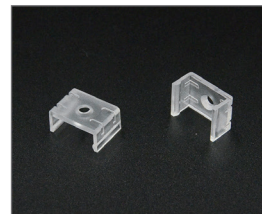
Aluminum Profile



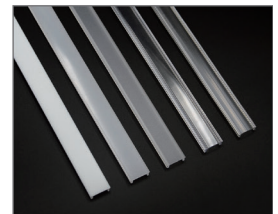
End Cap



Mounting Clip  
(Metal)



Mounting Clip  
(Plastic)



Cover

Part Number:

**F-23DS-**



**Lens**

CL=Clear  
 FR=Frosted  
 MLK=Milky  
 W=White

Part Number:

**F-23DS-**



**Length**  
 8= 8 Foot



**Lens**  
 CL=Clear  
 FR=Frosted  
 MLK=Milky  
 W=White